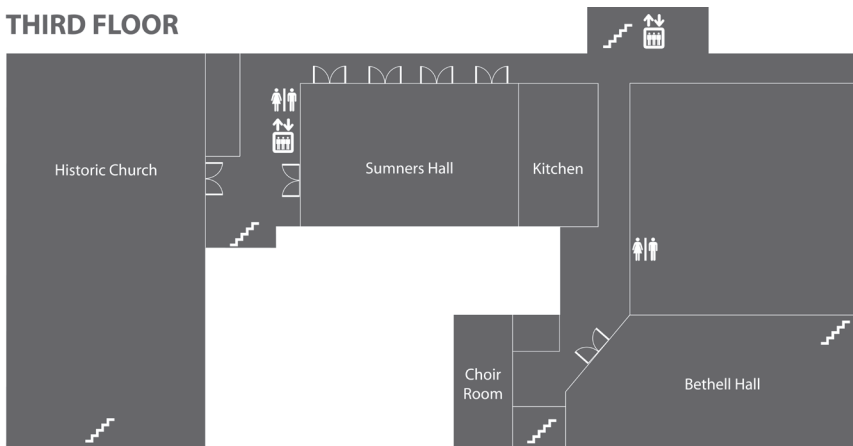


# Meeting and Event Space

## THIRD FLOOR



## SECOND FLOOR



## Room Capacity Chart

Room capacities are approximate and will vary based on set-up needs and table and chair selection.

Third Floor						
Room	Sq.Ft.	Classroom	Theatre	Conference	Banquet	Measurements
Sumners Hall	3344	129	250	N/A	184	44' (w) X 76' (l)
Bethel Hall	2560	112	225	N/A	192	32' (d) X 80' (l)
Choir Room	760	36	72	24	40	20' (d) X 38' (l)
Second Floor						
Crail A	834	30	60	24	40	45.5' (d) X 18.3' (w)
Crail B	932	33	65	26	48	45.5' (d) X 20.5' (w)
Crail C	1816	72	140	N/A	100	45.4' (d) X 40' (w)
Crail Hall	3585	140	280	N/A	200	45.5' (d) X 78.8' (w)
Guild Room	565	-	64	20	-	26.3' (d) X 21.5' (w)
Library	280	N/A	N/A	10	N/A	14' (w) X 20' (l)
Vestry Conference Room	912	18	35	26	N/A	24' (d) X 38' (l)
Basement Level						
Gymnasium	3432	129	250	N/A	184	44' (d) X 78' (L)
Room 015	380	21	30	20	N/A	20' (d) X 19' (L)